

PYBUTHRIN[®]

33

Insecticide

✓ Ideal for hot / thermal fogging

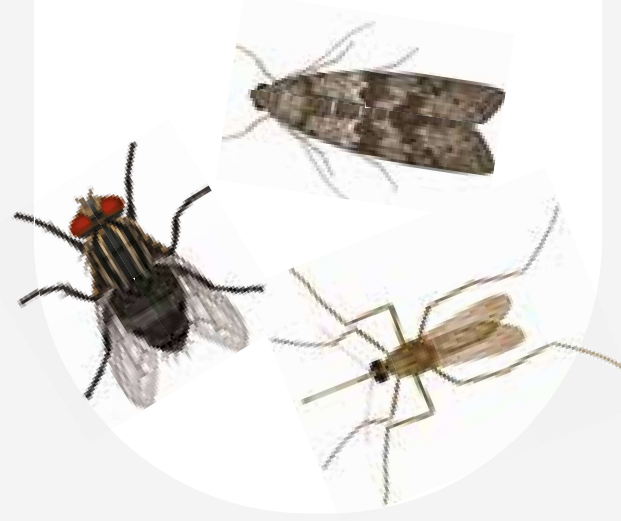
Pybuthrin[®] 33

Active substance: *Chrysanthemum cinerariaefolium* extract from open and mature flowers of *Tanacetum cinerariifolium* obtained with supercritical CO₂ 0.74% w/w (3 g/l), piperonyl butoxide and Distillates (petroleum), hydrotreated light.

DANGER



May be fatal if swallowed and enters airways.
Causes skin irritation.
Very toxic to aquatic life with long lasting effects.
Wear protective gloves/protective clothing/eye protection.
IF exposed or concerned: Call a POISON CENTER or doctor/physician.
Dispose of contents/container to a licensed hazardous-waste disposal contractor or collection site except for empty clean containers which can be disposed of as non-hazardous waste.
Collect spillage.
To avoid risks to human health and the environment, comply with the instructions for use. **PCS 93411, HSE 5106**



Flying Insect Control

envu[™] 5LE

GB185417924F - A4b

PYBUTHRIN[®] 33

**Use biocides safely and sustainably.
Always read the label and product information before use and respect all the instructions provided.
It is illegal to use this product for uses or in a manner other than prescribed on this label.**

**STATUTORY CONDITIONS RELATING TO USE.
FOR USE ONLY AS AN INSECTICIDE.
FOR USE ONLY BY PROFESSIONAL OPERATORS**

FOR PROFESSIONAL USE in Public Hygiene/Nuisance.

Dose :

Space spray:

Indoors: 1 litre of product per 3000 m³.

Outdoors: Up to 25 litres per ha / 1 litre per 2000 m².

Surface (contact) spray: 5 litres of product per 100 m².

READ ALL PRECAUTIONS BEFORE USE

PCS 93411, HSE 5106

When stored in a dry place at temperature not exceeding 25°C Pybuthrin 33 has a shelf life of 2 years.
This product is approved under The Control of Pesticides Regulations (1986) for use as directed (HSE 5106).

Authorisation holder and marketing company for Great Britain:

2022 Environmental Science FR SAS

Milton Hall, Ely Rd, Milton, Cambridge, CB24 6WZ

Authorisation holder and marketing company for Ireland :

2022 Environmental Science FR SAS

3 Place Giovanni Da Verrazzano 69009 Lyon, France

Further information is available from: Telephone: 00800 12149451
www.uk.envu.com

WHO-classification: U (Unlikely to present acute hazard in normal use).

For 24-hour emergency information contact Telephone: +44 20 3807 3798

Poison Information: For information or to report a poisoning incident contact: The National Poisons Information Centre, Beaumont Hospital, Dublin (01-8092166), retain the label for reference.

Envu, the Envu logo and Pybuthrin[®] 33 are trademarks owned by
Environmental Science U.S. LLC. or one of its affiliates

Expiry date: See on the pack
Batch number : See on the pack

GBI85374664F - A4b

A *Chrysanthemum cinerariaefolium* extract from open and mature flowers of *Tannacetum cinerariifolium* obtained with supercritical CO₂ spray combining rapid knockdown and kill with non-persistence making it suitable for use in food handling premises. Pyrethrin 33 will also flush out insects from their harbourages.

For the control of:

Flying Insects e.g. flies, wasps (and wasps nests), and stored product moths and mosquitoes.

Crawling Insects e.g. cockroaches and stored product insects.

DIRECTIONS FOR USE

Formulation Code: Ultra low volume (ULV) liquid [UL]

It is illegal to use this product for uses or in a manner other than prescribed on this label.

Dispose of contents/container in accordance with local regulations.

A ready-to-use space spray/fogger and surface (contact spray) for use in the following situations.

Domestic Situations: Private housing.

Food Handling:

Processing: food manufacture, kitchens, slaughterhouses etc.

Storage: food retailers, warehouses, raw material stores etc.

Preparation: restaurants, commercial kitchens etc.

Public Buildings:

Hospitals (excluding occupied wards), hotels, public baths, municipal buildings, churches, halls, community centres, cinemas etc.

Outdoors

Refuse tips, sewage works (excluding filter beds), amenity areas etc.

RATES OF APPLICATION

Where	Spraying Equipment	Volume	Area	Other Information
Space Spray Indoor	Apply with any suitable hand, mechanically or electrically operated sprayer capable of producing a fine mist or fog.	1 litre	3000 m ³	Close windows and doors before spraying and for at least 30 minutes afterwards. Distribute evenly as a fine mist or fog. For moth infestations, treatment at weekly intervals is recommended until infestations are brought under control. More frequent applications may be necessary for heavy infestations. Spray as frequently as the situation demands for flying insect control.
Space Spray Outdoor (Urban/Industrial sites)		1 litre	2000 m ² for large area 400 m ² for small area	The best conditions for outdoor spraying occur in the early morning or late afternoon and evening when conditions are most likely to be still. Spray as frequently as the situation demands.
Surface (contact) Spray	Apply with any suitable hand, mechanically or electrically operated sprayer capable of producing a coarse spray. Use only equipment adjusted to give a coarse spray.	1 litre	20 m ²	Sufficiently dampen the insects. Apply directly to the insects present on the fabric of warehouses, granaries, mills, bakeries and similar situations, or insects on the surfaces of bags and cases containing stored food products. Special attention should be paid to cracks and crevices and other insect harbourages.
Wasp Nests		Apply liberally and directly to nest or to entrance holes of concealed nests	Wasp Nest directly or entrance holes of concealed nests	Apply at dusk or when activity around the nest is quiet.

SPRAYING EQUIPMENT

As a space spray:

Apply with any suitable hand, mechanically or electrically operated sprayer capable of producing a fine mist or fog.

As a surface (contact) spray:

Apply with any suitable hand, mechanically or electrically operated sprayer capable of producing a coarse spray.

Use only equipment adjusted to give a coarse spray.

WARNINGS

Avoid inhalation of spray and contact with skin and eyes.

Do not spray the moving parts of any machinery, electric motors and switchgear.

Do not spray and avoid spilling on plastics, synthetic tiles or light coloured surfaces.

This spray will not harm ordinary fabrics or affect commonly used dyes, but before spraying delicate or expensive materials test first by rubbing a little spray on some inconspicuous spot.

Polished surfaces may lose their gloss until re-polished.

This spray is NOT suitable for use on plants.

It is illegal to disturb bats or their roosts and this may influence the use of Pybuthrin 33 in roof spaces etc.

No treatment should be made within a roof space without first ascertaining whether bats use the site as a roost.

PRECAUTIONS

The (COSHH) Control of Substances Hazardous to Health Regulations 2002 may apply to the use of this product at work.

Engineering control of operator exposure must be used where reasonably practicable in addition to the following items of personal protective equipment.

Wear suitable protective clothing (COVERALLS) SYNTHETIC RUBBER/PVC GLOVES AND EYE PROTECTION when using.

DO NOT BREATHE FOG OR SPRAY MIST. Otherwise wear respiratory protective equipment and eye protection.

However engineering controls may replace personal protective equipment if a COSHH assessment shows they provide an equal or higher standard of protection.

Avoid excessive contamination of coveralls.

DO NOT CONTAMINATE FOODSTUFFS, EATING UTENSILS OR FOOD CONTACT SURFACES.

This material and its container must be disposed of in a safe way. WASH HANDS AND EXPOSED SKIN before meals and after use.

KEEP IN SAFE PLACE.

UNPROTECTED PERSONS AND ANIMALS SHOULD BE KEPT AWAY FROM TREATED AREAS.

UNTIL SURFACES ARE DRY.

HAZARDOUS TO BEES.

EXCLUDE ANIMALS DURING APPLICATION.

COVER ALL WATER STORAGE TANKS before application.

All bats are protected under the Wildlife and Countryside Act (1981) or the Wildlife (Northern Ireland) Order (1985). Before treating any structure used by bats, consult English Nature, Scottish Natural Heritage, The Countryside Council for Wales or Department of the Environment for Northern Ireland.

FOR IRELAND: ALL BATS ARE PROTECTED UNDER SCHEDULE 5 OF THE WILDLIFE ACTS (1976 AND 2000). BEFORE TREATING ANY STRUCTURE USED BY BATS, CONSULT THE NATIONAL PARKS AND WILDLIFE SERVICE.

FIRST AID

General: Move out of dangerous area. Place and transport victim in stable position (lying sideways). Remove contaminated clothing immediately and dispose of safely.

Ingestion: Wash out mouth with water. Contact poison treatment specialist. Seek medical advice immediately if symptoms occur and/or large quantities have been ingested. In case of impaired consciousness place in recovery position and seek medical advice immediately. Do not give fluids or induce vomiting. Keep container or label available.

In case of ingestion, gastric lavage should be considered in cases of significant ingestions only with the first 2 hours. However, the application of activated charcoal and sodium sulphite is always advisable.

Skin Contact: Remove contaminated clothing and shoes. Wash contaminated skin with soap and water. Contact poison treatment specialist if symptoms occur. Seek medical attention if irritation develops and persists.

Eye Contact: Rinse immediately with plenty of water, also under the eyelids, for at least 15 minutes.